



# MONTHLY SUMMARY OF STATISTICS

WESTERN  
AUSTRALIA

EMBARGO: 11:30AM (CANBERRA TIME) FRI 29 OCT 1999

## CONTENTS

	<i>page</i>
Notes .....	2

### TABLES

<b>1</b> Population .....	4
<b>2</b> Tourism .....	8
<b>3</b> Employment .....	14
<b>4</b> Retail .....	19
<b>5</b> Construction .....	20
<b>6</b> Production .....	23
<b>7</b> Overseas Trade .....	27
<b>8</b> Transport .....	29
<b>9</b> Finance .....	30
<b>10</b> Statistical Summary .....	31

- For more information about these and related statistics, contact Information Services on Perth 08 9360 5140, or Client Services in any ABS office as shown on the back cover of this publication.

## NOTES

### FORTHCOMING ISSUES

<i>ISSUE</i>	<i>RELEASE DATE</i>
November 1999	30 November 1999
December 1999	23 December 1999
January 2000	31 January 2000
February 2000	29 February 2000
March 2000	31 March
April 2000	28 April



### SYMBOLS AND OTHER USAGES

n.a.	not available
n.e.i.	not elsewhere included
n.p.	not available for publication but included in totals where applicable
n.y.a.	not yet available
—	nil or rounded to zero
..	not applicable
*	subject to sampling variability too high for most practical purposes
p	preliminary - figure or series subject to revision
r	figure or series revised since previous issue
—	break in continuity of series (where drawn between two consecutive figures or columns)



### INQUIRIES

For information about other ABS statistics and services, please refer to the back of this publication.

For further information about these statistics, contact Information Services on (08) 9360 5140.

COLIN NAGLE  
REGIONAL DIRECTOR, WESTERN AUSTRALIA

# CONTENTS

Page

## TABLES

### Population

1.1	Estimated Resident Population	4
1.2	Components of Population Change	5
1.3	Registration of Births, Deaths, Marriages and Divorces	6
1.4	Rates of Births, Deaths, Marriages and Divorces	7

### Tourism

2.1	Overseas Arrivals and Departures	8
2.2	Short-term Overseas Visitor Arrivals from Selected Countries	9
2.3	Short-term Overseas Visitor Arrivals by Air for Holiday	10
2.4	Short-term Departures of Residents to Selected Destinations	11
2.5	Short-term Departures of Residents by Air to Selected Destinations: Holiday	12
2.6	Tourist Accommodation	13

### Employment

3.1	Labour Force Status: Seasonally Adjusted	14
3.2	Labour Force Status: Trend	15
3.3	Average Weekly Earnings of Employees: Trend	16
3.4	Industrial Disputes Causing Stoppage of Work	17
3.5	Wage and Salary Earners: Industry-Sector	18

### Retail

4.1	Monthly Retail Turnover	19
-----	-------------------------	----

### Construction

5.1	Dwelling Units Approved	20
5.2	Non-Residential Building Approved	21
5.3	Selected Housing Price Indexes: Perth	21
5.4	Price Index of Materials Used in Building Other Than House Building:Perth	22

### Production

6.1	Livestock Slaughtered	23
6.2	Meat Produced	23
6.3	Wool Receivals and Live Sheep Exports	24
6.4	Energy Production	25
6.5	Mineral Exploration: Expenditure by Type of Mineral Sought	26
6.6	Mineral Production	26

### Overseas Trade

7.1	Imports by Selected Divisions	27
7.2	Exports by Selected Divisions	28

### Transport

8.1	New Motor Vehicle Registrations	29
8.2	Vehicle Registration Statistics	29

### Finance

9.1	Private New Capital Expenditure by Selected Industry Groups	30
-----	---	----

### Statistical Summary

10.1	Statistical Summary	31
------	---------------------	----

# 1.1

## ESTIMATED RESIDENT POPULATION

	<i>Males</i>	<i>Females</i>	<i>Persons</i>
	no.	no.	no.
<b>Financial Years</b>			
1995-96	887 577	877 679	1 765 256
1996-97	904 382	893 488	1 797 870
1997-98r	920 549	908 596	1 829 145
<b>Calendar Years</b>			
1996	896 075	885 793	1 781 868
1997r	911 349	900 247	1 811 596
1998 r	928 961	916 588	1 845 549
<b>Quarters</b>			
Dec 97 r	911 349	900 247	1 811 596
Mar 98 r	916 718	905 101	1 821 819
Jun 98 r	920 549	908 596	1 829 145
Sep 98 r	925 267	912 922	1 838 189
Dec 98 r	928 961	916 588	1 845 549
Mar 99 r	933 768	920 864	1 854 632

Source: ABS Catalogue No. 3101.0 (Table 4).

### ANALYSIS OF TABLE 1.1

The estimated resident population of Western Australia at 31 March 1999 was 1,854,632, an increase of 9,083 in the March quarter and 32,813 since 31 March 1998. Western Australia had a growth rate of 1.8% for the 12 months ended March 1999, the highest in Australia.

# 1.2 COMPONENTS OF POPULATION CHANGE

	Natural increase	Net estimated overseas migration(a)	Net estimated interstate migration	Total increase(b)
	no.	no.	no.	no.
<b>Financial Years</b>				
1995-96	13 953	12 339	4 066	31 469
1996-97	14 158	12 267	6 189	32 614
1997-98 r	13 715	12 834	4 726	31 275
<b>Calendar Years</b>				
1996	13 980	12 334	5 683	31 997
1997 r	13 675	10 761	5 292	29 728
1998 r	14 215	15 864	3 874	33 953
<b>Quarters</b>				
Dec 97 r	3 253	1 730	1 153	6 136
Mar 98 r	3 761	4 776	1 686	10 223
Jun 98 r	3 731	2 715	880	7 326
Sep 98 p	3 348	4 520	1 176	9 044
Dec 98 p	3 375	3 853	132	7 360
Mar 99 p	3 442	5 210	431	9 083

(a) Includes an adjustment for 'category jumping'.

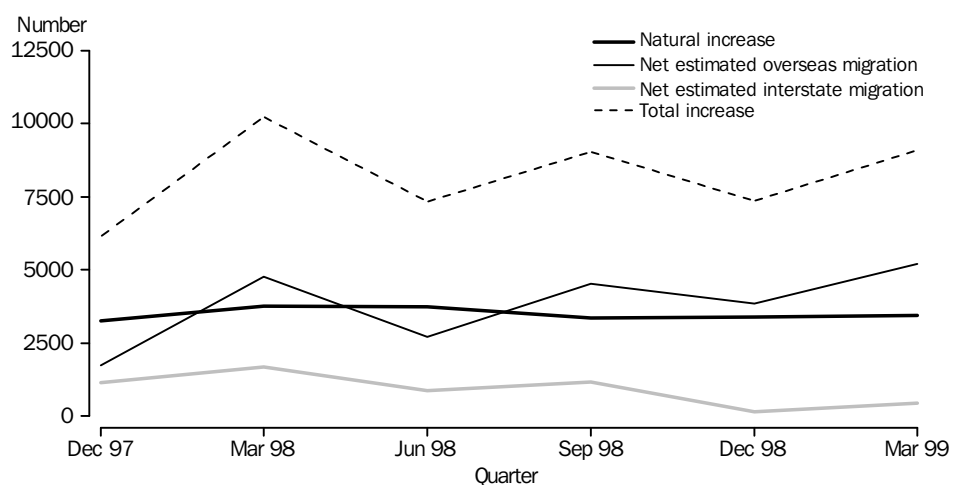
(b) Differences between total growth and the sum of natural increase and net migration arise from retrospective adjustments (which are made after every Census) to compensate for any intercensal discrepancy.

Source: ABS Catalogue No. 3101.0 (Table 2).

## ANALYSIS OF TABLE 1.2

In the March 1999, the population increased by 9,083 compared with an increase of 7,360 in the previous quarter. Natural increase was up 1% on the December quarter 1998. There were also increases of 1,357 (35%) and 299 (227%) in overseas migration and interstate migration respectively.

## COMPONENTS OF POPULATION CHANGE, WESTERN AUSTRALIA



Source: ABS Catalogue No. 3101.0.

# 1.3

## REGISTRATION OF BIRTHS, DEATHS, MARRIAGES AND DIVORCES

	Live Births (a)	Infant Deaths (a)	Total Deaths (a)	Marriages	Divorces
<b>Financial Years</b>					
1995-96	24 614	140	10 661	10 178	5 195
1996-97	24 744	133	10 586	10 372	4 931
1997-98 r	24 705	138	10 990	10 457	5 112
<b>Calendar years</b>					
1996	24 905	145	10 925	10 294	4 959
1997 r	24 514	136	10 839	10 456	5 046
1998 r	24 965	117	10 750	10 705	5 268
<b>Quarters</b>					
Dec 97 r	5 914	43	2 661	3 532	1 320
Mar 98 r	6 166	25	2 405	2 726	1 219
Jun 98 r	6 339	32	2 608	2 741	1 213
Sep 98 p	6 328	34	2 980	1 550	1 463
Dec 98 p	6 132	26	2 757	3 688	1 373
Mar 99 p	5 957	24	2 515	2 753	1 207

(a) NOTE: With the exception of preliminary data estimates, births and deaths are included by State or Territory of usual residence and year of occurrence. For preliminary estimates births and deaths are included by State or Territory of usual residence and year of registration.

Source: ABS Catalogue No. 3101.0 (Tables 11, 12, 13, 14 & 15).

### ANALYSIS OF TABLE 1.3

The number of live births in the March quarter 1999 fell by 175 or 2.9% on the previous quarter and was 209 or 3.4% less than the number in the same quarter of 1998.

Infant deaths numbered 24 in the March quarter 1999, 2 fewer than in the December quarter 1998, and 1 less than in the March quarter 1998.

Total deaths fell by 242 or 8.8% from the December quarter 1998, and were 110 or 4.6% more than the number in the March quarter 1998.

The number of marriages in the March quarter 1999 decreased by 25.4% or 935 from the previous quarter, and was 1% or 27 more than in the same quarter of 1998.

The number of divorces decreased from 1,373 in the December quarter to 1,207 in the March quarter 1999, a decrease of 12.1%. The number was 1% or 12 less than in the March quarter 1998.

# 1.4

## RATES OF BIRTHS, DEATHS, MARRIAGES AND DIVORCES

	Live Births(a)	Infant Mortality(b)	Total Deaths(a)	Marriages(a)	Divorces(a)
<b>Financial Years</b>					
1995-96	13.9	5.7	6.0	5.8	2.9
1996-97 r	13.8	5.4	5.9	5.8	2.7
1997-98 r	13.5	5.6	6.0	5.7	2.8
<b>Calendar years</b>					
1996 r	14.0	5.8	6.1	5.8	2.8
1997 r	13.5	5.5	6.0	5.8	2.8
1998 r	13.5	4.7	5.8	5.8	2.9
<b>Quarters</b>					
Dec 97 r	13.1	7.3	5.9	7.8	2.9
Mar 98 r	13.6	4.1	5.3	6.0	2.7
Jun 98 r	13.9	5.0	5.7	6.0	2.7
Sep 98 p	13.8	5.4	6.5	3.4	3.2
Dec 98 p	13.3	4.2	6.0	8.0	3.0
Mar 99 p	12.9	4.0	5.4	6.0	2.6

(a) For financial and calendar years the rate is per 1,000 estimated resident population at 31 December and 30 June, respectively. For quarters, the rate is per 1,000 of the average of the previous and current quarterly populations.

(b) Infant deaths per 1,000 live births.

Source: ABS Catalogue No. 3101.0.

### ANALYSIS OF TABLE 1.4

In the March quarter 1999, the infant mortality rate decreased to 4.0 infant deaths per 1,000 live births.

The crude birth rate, crude death rate, crude divorce rate, crude marriage rate, and crude infant mortality rate were all lower than in the December quarter 1999.

In the March quarter 1999, the crude birth rate, crude infant mortality rate and crude divorce rate were lower than in the same quarter of the previous year, the crude death rate was higher, and the crude marriage rate was the unchanged from the same quarter of the previous year.

*For more information regarding tables on Vital statistics, please contact Sue Lee on (08) 9360 5935.*

# 2.1 OVERSEAS ARRIVALS AND DEPARTURES

	SHORT-TERM ARRIVALS.....			LONG-TERM ARRIVALS.....		Total Arrivals
	Permanent Arrivals	West Australian Residents	Overseas Visitors	West Australian Residents	Overseas Visitors	
<b>Financial Years</b>						
1996-97	10 520	334 750	397 610	8 880	11 650	763 410
1997-98	9 750	379 660	402 400	9 340	12 880	814 000
1998-99	10 670	397 820	410 840	7 290	13 390	840 010
<b>Months</b>						
May 98	730	29 430	28 280	600	580	59 610
Jun 98	950	31 540	27 400	730	700	61 330
Jul 98	920	39 030	31 070	600	1 950	73 560
Aug 98	830	38 230	27 450	420	790	67 720
Sep 98	870	32 500	28 810	540	790	63 520
Oct 98	860	49 620	35 710	590	1 010	87 790
Nov 98	810	33 300	38 800	740	640	74 290
Dec 98	920	23 510	47 400	1 140	640	73 610
Jan 99	1 050	44 650	33 950	680	2 090	82 420
Feb 99	910	26 370	41 510	540	2 580	71 910
Mar 99	880	26 070	38 100	580	660	66 290
Apr 99	910	28 620	32 390	450	900	63 260
May 99	910	28 000	27 520	450	640	57 540
Jun 99	790	27 930	28 150	540	710	58 120
Jul 99	1 020	41 420	33 100	610	2 180	78 360

	SHORT-TERM DEPARTURES.....			LONG-TERM DEPARTURES.....		Total Departures
	Permanent Departures	West Australian Residents	Overseas Visitors	West Australian Residents	Overseas Visitors	
<b>Financial Years</b>						
1996-97	3 610	339 990	389 530	8 080	6 180	747 390
1997-98	4 000	387 490	402 850	8 500	7 450	810 300
1998-99	3 970	399 610	413 400	8 880	5 020	830 880
<b>Months</b>						
May 98	350	33 080	32 590	730	460	67 200
Jun 98	420	34 750	29 120	650	780	65 720
Jul 98	280	36 280	26 890	660	590	64 690
Aug 98	290	38 300	29 190	810	320	68 900
Sep 98	250	38 790	26 410	580	360	66 390
Oct 98	270	38 950	32 090	620	330	72 260
Nov 98	310	31 580	34 830	630	400	67 750
Dec 98	330	35 170	45 150	780	700	82 130
Jan 99	510	30 710	46 890	1 220	430	79 760
Feb 99	280	26 330	33 360	720	330	61 020
Mar 99	410	32 730	37 620	780	340	71 870
Apr 99	400	25 230	36 300	770	340	63 020
May 99	320	31 920	30 650	750	370	64 000
Jun 99	340	33 610	34 010	590	530	69 080
Jul 99	370	40 280	28 560	700	570	70 480

Source: ABS Unpublished Overseas Arrivals and Departures. Since figures have been rounded to the nearest ten, discrepancies may occur between sums of component items and totals.



The total of 78,360 overseas arrivals in July 1999 was 20,240 higher than in the previous month and 4,800 higher than in July 1998.

In July 1999, 41,420 Western Australian residents returned from short-term overseas visits, an increase of 48.3% on June 1999. In July 1999, 33,100 overseas visitors arrived in Western Australia for short-term visits. This was an increase of 17.6% on June 1999.

There were 610 residents returning to Western Australia in July 1999, after a long-term stay overseas. Arrivals of long-term overseas visitors numbered 2,180 in July 1999. This was an increase of 1,470 over the previous month, and an increase of 230 on July 1998 figures.

Total departures of residents and visitors numbered 70,480 in July 1999, an increase of 2.0% on the previous month and an increase of 9.0% on July 1998.

The 40,280 short-term departures of Western Australian residents in July 1999 represented an increase of 19.8% on June 1999, and an increase of 11.0% on July 1998.

## 2.2 SHORT-TERM OVERSEAS VISITOR ARRIVALS FROM SELECTED COUNTRIES (a)

	COUNTRY OF ORIGIN.....					Total(b)
	New Zealand	UK & Ireland	Indonesia	Japan	Singapore	
<b>Financial Years</b>						
1996-97	26 420	69 460	51 600	33 930	63 950	397 610
1997-98	26 410	81 390	34 380	32 620	73 140	402 400
1998-99	27 490	91 820	28 600	34 530	64 890	410 840
<b>Months</b>						
May 98	2 470	3 820	2 470	2 010	6 400	28 280
Jun 98	2 110	3 540	1 770	1 290	10 110	27 400
Jul 98	3 120	4 040	2 900	3 360	4 080	31 070
Aug 98	1 930	4 010	1 930	4 570	4 310	27 450
Sep 98	2 850	5 460	1 670	2 470	4 100	28 820
Oct 98	2 100	7 070	2 600	2 730	5 490	35 710
Nov 98	1 910	12 680	1 740	3 080	5 150	38 810
Dec 98	3 190	12 430	2 600	3 630	7 440	47 400
Jan 99	1 530	8 880	4 200	2 290	3 000	33 950
Feb 99	1 670	10 670	2 420	3 500	6 100	41 510
Mar 99	2 610	10 010	1 970	3 580	5 710	38 100
Apr 99	3 060	7 150	2 050	2 520	4 760	32 380
May 99	1 480	4 670	3 130	1 670	5 370	27 520
Jun 99	2 050	4 770	1 390	1 130	9 380	28 150
Jul 99	2 040	5 510	2 490	3 650	4 160	33 100

(a) Comprises travellers whose intended stay is less than twelve months.

(b) Total includes countries not listed in this table.

Source: ABS Unpublished Overseas Arrivals and Departures .

## ANALYSIS OF TABLE 2.2

Short-term visitor arrivals from Singapore decreased by 5,220 in July 1999 on June 1999, and increased by 90 on July 1998 and represented 12.6% of all short-term visitor arrivals.

Short-term visitor arrivals from the UK and Ireland increased by 15.5% previously on June 1999, and increased by 36.4% from July 1998 and represented 16.6% of all short-term visitor arrivals.

# 2.3

## SHORT-TERM OVERSEAS VISITOR ARRIVALS BY AIR, FOR HOLIDAY (a)

	COUNTRY OF ORIGIN.....								Total(b)
	New Zealand	UK & Ireland	Indonesia	Japan	Malaysia	Singapore	Thailand	United States	
<b>Financial Years</b>									
1996-97	6 670	24 050	33 870	27 870	23 600	45 350	10 230	2 590	215 820
1997-98	7 830	27 660	19 580	26 650	23 920	50 470	5 880	3 520	205 550
1998-99	7 710	34 590	12 770	24 560	17 220	41 710	4 720	3 690	192 550
<b>Months</b>									
May 98	720	1 280	1 170	1 360	2 480	4 530	230	290	13 900
Jun 98	710	1 160	1 080	1 110	1 110	8 040	160	330	15 780
Jul 98	800	1 700	920	2 150	900	1 480	170	170	11 570
Aug 98	300	1 130	630	2 770	1 150	2 600	270	260	11 620
Sep 98	940	1 710	580	1 500	1 300	2 290	340	210	11 550
Oct 98	620	2 520	1 310	1 730	1 160	3 630	410	270	16 860
Nov 98	470	4 820	890	2 460	1 110	3 890	200	350	19 030
Dec 98	890	3 770	1 760	2 870	1 300	5 890	660	390	24 000
Jan 99	550	3 430	2 110	1 600	880	1 250	170	380	14 160
Feb 99	520	5 170	780	2 530	1 940	3 230	170	480	19 490
Mar 99	560	4 240	1 030	2 990	1 360	4 030	370	460	19 510
Apr 99	940	2 760	750	1 930	1 910	3 040	1 350	250	16 210
May 99	440	1 590	1 480	1 150	2 960	3 640	380	150	14 070
Jun 99	680	1 750	550	880	1 250	6 720	230	300	14 470
Jul 99	490	2 070	790	2 900	960	1 660	310	550	14 890

(a) Comprises travellers whose intended stay is less than twelve months.

(b) Total includes countries not listed in this table.

Source: ABS Unpublished Overseas Arrivals and Departures.

### ANALYSIS OF TABLE 2.3

A total of 14,890 short-term overseas visitors arrived by air for holidays in Western Australia in July 1999, an increase of 2.9% on June 1999, and an increase of 28.7% on July 1998.

Short-term visitor arrivals by air for holiday from Singapore decreased by 5,060 in July 1999 on June 1999, and represented 11.1% of these holiday makers into the state.

# 2.4

## SHORT-TERM DEPARTURES OF RESIDENTS TO SELECTED DESTINATIONS (a)

COUNTRY OF DESTINATION.....

	New Zealand	UK & Ireland	Indonesia	Malaysia	Singapore	Total(b)
<b>Financial Years</b>						
1996-97	26 580	50 320	89 030	23 620	26 770	339 990
1997-98	30 360	54 190	103 090	25 820	34 520	387 490
1998-99	29 100	51 870	105 920	28 190	41 040	399 610
<b>Months</b>						
May 98	1 470	6 460	6 920	1 520	2 790	33 080
Jun 98	1 530	6 230	7 960	2 350	3 210	34 750
Jul 98	2 420	5 100	10 700	2 640	2 880	36 280
Aug 98	1 460	6 330	11 350	2 380	3 260	38 300
Sep 98	3 110	4 400	12 740	2 310	2 980	38 790
Oct 98	2 350	4 730	13 020	2 970	3 370	38 950
Nov 98	2 340	3 460	9 810	2 110	3 320	31 580
Dec 98	4 250	4 270	8 310	2 500	2 260	35 170
Jan 99	2 480	1 600	8 150	2 200	4 670	30 720
Feb 99	2 570	2 940	6 600	2 000	3 440	26 330
Mar 99	3 250	3 920	6 660	2 590	4 970	32 730
Apr 99	2 420	3 060	5 650	2 510	2 480	25 220
May 99	1 000	6 200	6 270	2 110	3 100	31 920
Jun 99	1 450	5 880	6 650	1 820	4 330	33 620
Jul 99	2 440	5 460	10 180	3 650	4 480	40 290

(a) Comprises travellers whose intended stay is less than twelve months.

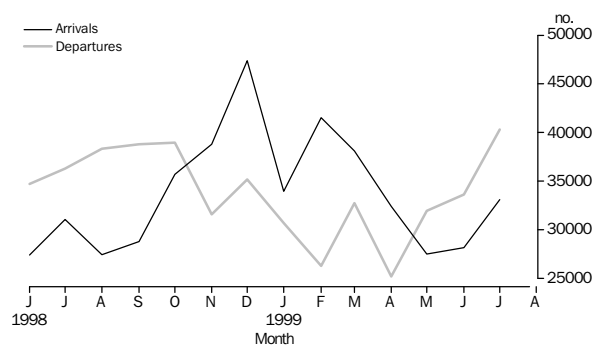
(b) Total includes countries not listed in this table.

Source: ABS Unpublished Overseas Arrivals and Departures.

### ANALYSIS OF TABLE 2.4

In July 1999, 40,290 Western Australian residents departed for short-term periods overseas, an increase of 19.8% on June 1999, and a 11.1% increase on July 1998. Short-term departures of residents to Malaysia increased by 38.3% from the month of July 1998.

### SHORT-TERM ARRIVALS OF OVERSEAS VISITORS AND DEPARTURES OF RESIDENTS



Source: ABS Unpublished Overseas Arrivals and Departures.

# 2.5

## SHORT-TERM DEPARTURES OF RESIDENTS BY AIR, FOR HOLIDAY (a)

COUNTRY OF DESTINATION.....									
		<i>New Zealand</i>	<i>UK &amp; Ireland</i>	<i>Indonesia</i>	<i>Malaysia</i>	<i>Singapore</i>	<i>Thailand</i>	<i>United States</i>	<i>Total (b)</i>
<b>Financial Years</b>									
1996-97		10 860	23 760	172 640	10 660	13 480	9 790	9 540	186 540
1997-98		12 500	25 910	85 760	12 820	19 560	18 320	11 440	222 180
1998-99		11 430	19 790	88 350	15 580	21 970	22 040	9 220	222 970
<b>Months</b>									
May 98		490	3 010	5 530	720	1 500	3 020	1 070	18 650
Jun 98		350	3 300	6 320	1 220	1 490	2 090	1 250	19 940
Jul 98		1 060	2 430	8 810	1 520	1 420	3 040	1 080	22 640
Aug 98		720	2 880	9 140	1 340	1 920	2 540	480	22 050
Sep 98		1 570	1 550	10 650	1 070	1 690	2 430	930	22 920
Oct 98		1 010	1 640	11 460	1 800	1 950	2 880	850	24 390
Nov 98		430	1 000	8 610	1 050	1 320	970	480	16 530
Dec 98		1 180	1 570	6 970	1 350	950	970	1 270	18 300
Jan 99		1 000	560	6 760	1 300	2 690	1 520	460	17 200
Feb 99		1 060	1 290	5 590	990	1 830	1 340	350	14 600
Mar 99		1 670	1 200	5 520	1 750	3 250	1 700	580	18 350
Apr 99		1 270	1 350	4 800	1 550	1 260	1 590	720	14 270
May 99		390	2 370	5 000	1 140	1 590	1 710	990	16 390
Jun 99		** 50	2 520	5 200	690	2 300	1 330	1 140	16 900
Jul 99		990	2 290	8 500	2 540	2 840	3 220	230	24 160

(a) Comprises travellers whose intended stay is less than twelve months.

(b) Total includes countries not listed in this table.

\*\* Estimates contain Relative Standard Error greater than 50 %. Refer to Explanatory Notes and Standard Error Section of Catalogue no. 3401.0

Source: ABS Unpublished Overseas Arrivals and Departures.

### ANALYSIS OF TABLE 2.5

There were 24,160 short-term departures by air of Western Australian residents for holidays abroad in July 1999. This was 43.0% more than in June 1999 and 6.7% more than in July 1998.

In July 1999, 2,290 Western Australians departed for holidays in the United Kingdom and Ireland, a decrease of 9.1% over the previous month.

Indonesia continues to be the favoured holiday destination for Western Australians, with 35.2% of all short-term departures of residents by air in July 1999.

*For more information regarding Overseas Arrivals and Departures, please contact Carolann Hoad on (08) 9360 5199.*

## 2.6 TOURIST ACCOMMODATION

### HOTELS, MOTELS, GUEST HOUSES AND SERVICED APARTMENTS....

	<i>Establishments</i>	<i>Guest rooms</i>	<i>Employment</i>	<i>Room occupancy rates</i>	<i>Guest arrivals</i>	<i>Takings from accommodation</i>
	Number	Number	Persons	%	'000	\$'000
Apr 98				56	203	26 415
May 98				57	188	28 348
Jun 98	293	16 643	9 678	50	168	23 029
Jul 98				57	209	28 897
Aug 98				59	215	30 078
Sep 98	298	17 015	9 950	63	234	29 762
Oct 98				62	233	31 370
Nov 98				59	204	29 153
Dec 98	300	17 317	9 961	52	213	26 597
Jan 99				54	212	27 913
Feb 99				57	187	26 346
Mar 99	304	17 517	9 962	56	198	28 527
April 99				56	225	28 734
May 99				52	200	26 645
Jun 99	308	17 783	9 785	52	200	26 001

Source: ABS Product No. 8635.5.40.001. (The December quarter 1997 issue of *Tourist Accommodation, Western Australia*, ABS Catalogue No. 8635.5, was the final issue of this publication).

Note: The scope of the ABS quarterly Survey of Tourist Accommodation (STA) has changed since the December quarter 1997. Some units will have been reclassified and as a result, data will not be strictly comparable with previously published data for particular accommodation types.

From the March quarter 1998, only those in-scope establishments with 15 or more rooms or units are covered by the survey.

From the March quarter 1998, survey results are aggregated to Tourism Regions as defined by relevant State and Territory Tourist Commissions or equivalent organisations.

From the March quarter 1998, the data quoted above for Establishments, Guest rooms and Employment are quarterly.

As part of the future collection strategy of the STA, significant caravan parks, visitor hostels and remaining holiday flats, units and houses will be surveyed triennially, commencing with a year 2000 reference year.

For more information regarding the changes to the STA and the data available from this collection, please refer to the ABS publication Catalogue No. 8635.0.

*For more information relating to Tourist Accommodation, please contact Pam Prince on 9360 5207.*

# 3.1

## LABOUR FORCE STATUS (AGED 15 YEARS AND OVER): Seasonally Adjusted

	Employed full-time	Total employed	Total unemployed	Unemployment rate	Participation rate
	'000	'000	'000	%	%
<b>Males</b>					
Jul 98	446.2	502.4	42.6	7.8	76.1
Aug 98	447.4	504.7	41.4	7.6	76.2
Sep 98	447.3	509.8	41.5	7.5	76.7
Oct 98	446.9	509.0	41.9	7.6	76.6
Nov 98	445.8	507.6	41.7	7.6	76.2
Dec 98	447.6	510.4	42.8	7.7	76.6
Jan 99	446.8	510.4	40.9	7.4	76.2
Feb 99	444.7	508.0	40.9	7.5	75.7
Mar 99	446.2	512.2	37.3	6.8	75.6
Apr 99	447.5	513.9	39.4	7.1	76.0
May 99	440.5	508.6	36.0	6.6	74.7
Jun 99	442.6	507.9	38.7	7.1	74.9
Jul 99	445.4	510.5	36.8	6.7	74.8
Aug 99	448.4	515.3	37.2	6.7	75.4
Sep 99	449.2	514.7	41.6	7.5	75.8
<b>Females</b>					
Jul 98	446.2	502.4	42.6	7.8	76.1
Aug 98	447.4	504.7	41.4	7.6	76.2
Sep 98	447.3	509.8	41.5	7.5	76.7
Oct 98	446.9	509.0	41.9	7.6	76.6
Nov 98	445.8	507.6	41.7	7.6	76.2
Dec 98	447.6	510.4	42.8	7.7	76.6
Jan 99	446.8	510.4	40.9	7.4	76.2
Feb 99	444.7	508.0	40.9	7.5	75.7
Mar 99	446.2	512.2	37.3	6.8	75.6
Apr 99	447.5	513.9	39.4	7.1	76.0
May 99	440.5	508.6	36.0	6.6	74.7
Jun 99	442.6	507.9	38.7	7.1	74.9
Jul 99	445.4	510.5	36.8	6.7	74.8
Aug 99	448.4	515.3	37.2	6.7	75.4
Sep 99	203.7	394.1	28.1	6.7	57.5
<b>Persons</b>					
Jul 98	648.9	889.6	69.9	7.3	66.9
Aug 98	651.8	889.6	66.9	7.0	66.6
Sep 98	645.3	895.9	70.0	7.2	67.2
Oct 98	648.8	895.8	67.3	7.0	66.8
Nov 98	648.7	892.9	68.1	7.1	66.6
Dec 98	652.8	895.6	69.1	7.2	66.7
Jan 99	650.5	893.3	67.4	7.0	66.3
Feb 99	644.7	890.1	69.8	7.3	66.1
Mar 99	641.5	895.6	65.8	6.8	66.1
Apr 99	648.6	896.2	72.0	7.4	66.5
May 99	640.2	893.2	62.1	6.5	65.5
Jun 99	649.5	901.0	61.9	6.4	65.9
Jul 99	652.0	903.9	62.0	6.4	66.0
Aug 99	654.6	904.8	63.1	6.5	66.0
Sep 99	652.9	908.8	69.7	7.1	66.7

Source: ABS Catalogue No. 6202.0.

### ANALYSIS OF TABLE 3.1

The seasonally adjusted unemployment rate increased to 7.1 percent in September 1999.

The seasonally adjusted number of persons unemployed increased by 6,600 to 69,700, while the number of employed persons rose by 4,000 to 908,800.

Western Australia's seasonally adjusted participation rate for September 1999 increased to 66.7 percent and continues to be the highest of all the States.

## 3.2 LABOUR FORCE STATUS (AGED 15 YEARS AND OVER): Trend (a)

	Employed full-time	Total employed	Total unemployed	Unemployment rate	Participation rate
	'000	'000	'000	%	%
<b>Males</b>					
Jul 98	446.6	505.4	41.9	7.7	76.4
Aug 98	446.9	506.1	42.3	7.7	76.5
Sep 98	446.9	507.1	42.4	7.7	76.5
Oct 98	446.9	508.1	42.2	7.7	76.5
Nov 98	446.9	509.0	41.9	7.6	76.4
Dec 98	446.7	509.8	41.5	7.5	76.3
Jan 99	446.5	510.3	41.0	7.4	76.2
Feb 99	445.9	510.5	40.1	7.3	75.9
Mar 99	445.1	510.5	39.0	7.1	75.6
Apr 99	444.4	510.5	38.1	6.9	75.4
May 99	444.2	510.5	37.6	6.9	75.2
Jun 99	444.6	510.9	37.6	6.9	75.1
Jul 99	445.4	511.6	37.9	6.9	75.1
Aug 99	446.5	512.5	38.3	7.0	75.2
Sep 99	447.5	513.2	39.0	7.1	75.3
<b>Females</b>					
Jul 98	202.1	385.0	26.5	6.4	57.4
Aug 98	202.3	386.3	26.4	6.4	57.4
Sep 98	202.5	386.6	26.3	6.4	57.4
Oct 98	202.7	386.2	26.2	6.4	57.2
Nov 98	202.6	385.4	26.4	6.4	57.0
Dec 98	202.3	384.3	27.0	6.6	56.8
Jan 99	201.5	383.2	27.7	6.7	56.7
Feb 99	200.6	382.8	28.3	6.9	56.6
Mar 99	200.2	383.2	28.5	6.9	56.6
Apr 99	200.6	384.6	28.1	6.8	56.6
May 99	201.9	386.7	27.3	6.6	56.7
Jun 99	203.6	389.0	26.4	6.4	56.8
Jul 99	204.9	391.0	25.9	6.2	57.0
Aug 99	205.9	392.6	25.7	6.1	57.1
Sep 99	206.5	393.8	25.7	6.1	57.1
<b>Persons</b>					
Jul 98	648.7	890.3	68.4	7.1	66.9
Aug 98	649.1	892.5	68.6	7.1	66.9
Sep 98	649.4	893.7	68.6	7.1	66.9
Oct 98	649.6	894.3	68.4	7.1	66.8
Nov 98	649.5	894.3	68.3	7.1	66.7
Dec 98	649.0	894.0	68.5	7.1	66.5
Jan 99	647.9	893.5	68.7	7.1	66.4
Feb 99	646.4	893.2	68.4	7.1	66.3
Mar 99	645.2	893.7	67.5	7.0	66.1
Apr 99	645.0	895.1	66.2	6.9	66.0
May 99	646.1	897.3	64.9	6.7	66.0
Jun 99	648.2	899.9	64.1	6.6	66.0
Jul 99	650.3	902.6	63.8	6.6	65.9
Aug 99	652.4	905.1	64.0	6.6	66.1
Sep 99	654.0	907.0	64.7	6.7	66.2

(a) Trend estimates for the previous months have been revised.

Source: ABS Catalogue No. 6202.0.

### ANALYSIS OF TABLE 3.2

The trend estimate of the unemployment rate increased to 6.7% in September 1999.

*For more information regarding these tables, please contact Information Inquiries on (08) 9360 5140.*

# 3.3

## AVERAGE WEEKLY EARNINGS OF EMPLOYEES: Trend

	FULL TIME ADULTS.....		ALL PERSONS
	<i>Ordinary time earnings</i>	<i>Total earnings</i>	<i>Total earnings</i>
	\$	\$	\$
<b>Males</b>			
20 Feb 98	790.60	852.00	734.20
15 May 98	803.30	866.30	742.30
21 Aug 98	809.80	872.80	740.80
20 Nov 98	808.90	870.00	734.10
19 Feb 99	807.40	866.00	728.10
21 May 99	809.10	864.90	725.10
<b>Females</b>			
20 Feb 98	609.70	621.80	411.70
15 May 98	617.00	629.70	409.30
21 Aug 98	625.60	638.30	411.00
20 Nov 98	632.40	644.70	414.80
19 Feb 99	638.60	650.80	417.90
21 May 99	644.10	656.30	419.80
<b>Persons</b>			
20 Feb 98	723.90	767.10	568.70
15 May 98	736.20	781.20	572.40
21 Aug 98	744.40	789.60	573.00
20 Nov 98	746.60	790.40	572.10
19 Feb 99	747.80	790.00	571.40
21 May 99	750.90	791.30	572.00

Source: ABS Catalogue No. 6302.0.



# 3.4

## INDUSTRIAL DISPUTES CAUSING STOPPAGE OF WORK

### WORKERS INVOLVED.....

	<i>Number of Disputes</i>	<i>Directly</i>	<i>Indirectly</i>	<i>Total</i>	<i>Working days lost</i>
	Number	'000	'000	'000	'000
<b>Calendar Year</b>					
1996	54	36.2	0.0	36.2	47.3
1997	71	30.9	0.9	31.7	60.1
1998	78	28.6	0.1	28.8	61.2
<b>Months</b>					
May 98	6	4.1	0.0	4.1	2.3
Jun 98	9	4.0	0.0	4.0	5.8
Jul 98	3	0.4	0.0	0.4	0.5
Aug 98	10	7.0	0.0	7.0	11.7
Sep 98	10	4.1	0.0	4.1	13.2
Oct 98	12	3.3	0.0	3.3	5.3
Nov 98	18	5.1	0.0	5.1	5.7
Dec 98	8	1.7	0.0	1.7	4.4
Jan 99	n.p.	0.6	0.0	0.6	1.2
Feb 99	12	1.1	0.0	1.1	1.8
Mar 99	14	1.9	0.0	1.9	3.4
Apr 99	6	0.7	0.0	0.7	2.6
May 99	16	3.4	0.1	3.5	2.9
Jun 99	11	2.6	0.0	2.6	4.7
Jul 99	18	2.9	0.0	2.9	3.2

Source: Industrial Disputes, Unpublished Data.

Note: The waterfront dispute which commenced on 7 April 1998 has been excluded from the industrial disputes statistics in this publication, because the industrial action that took place did not constitute an 'industrial dispute' as defined by the ABS for purposes of collecting and compiling these statistics.

In ABS industrial disputes statistics, an industrial dispute is defined as a withdrawal from work by a group of employees (i.e. a strike), or a refusal by an employer or a number of employers to permit some or all of their employees to work (i.e. a lockout), each withdrawal or refusal being made in order to enforce a demand, to resist a demand, or to express a grievance. That is, the statistics cover employee strikes and employer lockouts, but do not cover other action due to labour disputes. (See *Industrial Disputes, Australia*, cat no. 6321.0 Explanatory Notes and Glossary for more details.)

# 3.5

## WAGE AND SALARY EARNERS: INDUSTRY-SECTOR

	NUMBER OF EMPLOYEES.....						GROSS EARNINGS
	Feb 1998	May 1998	Aug 1998	Nov 1998	Feb 1999	May 1999	June qtr 1999
	'000	'000	'000	'000	'000	'000	\$m
<b>Industry</b>							
Mining	28.2	29.3	29.6	27.2	30.5	29.3	539.7
Manufacturing	65.6	66.5	70.1	70.9	71.8	74.6	772.3
Electricity, gas and water supply	6.8	6.5	6.7	6.3	6.4	6.3	82.6
Construction	37.6	43.0	47.9	45.7	43.8	36.0	431.7
Wholesale trade	40.3	41.2	37.2	35.8	30.6	36.1	339.2
Retail trade	102.6	103.7	105.3	102.6	107.1	110.5	522.9
Accommodation, cafes & restaurants	40.5	38.6	49.1	51.7	57.3	46.7	215.7
Transport and storage	22.7	24.4	26.4	29.5	28.0	24.9	262.8
Communication services	9.5	9.6	9.5	8.9	9.1	8.9	97.9
Finance & insurance	27.7	29.7	29.9	29.4	28.7	28.5	275.4
Property & business services	86.6	101.0	89.0	84.7	84.9	100.9	798.3
Government administration and defence	31.9	31.5	28.3	29.3	29.1	30.1	274.8
Education	61.8	64.4	67.8	64.0	63.5	71.1	577.0
Health & community services	71.1	72.4	74.5	75.6	82.6	80.8	601.6
Cultural & recreational services	15.9	19.6	19.3	15.8	18.6	18.6	103.5
Personal & other services	22.8	24.4	26.0	28.2	26.2	28.2	203.0
<b>All industries (a)</b>	673.5	707.4	718.1	707.2	720.1	733.0	6 114.9
<b>Sector</b>							
Private	530.6	561.6	570.5	561.8	574.6	582.7	4 690.2
Public	142.8	145.8	147.7	145.4	145.5	150.3	1 424.7

	Feb 1999.....			May 1999.....		
	Full-time	Part-time	Persons	Full-time	Part-time	Persons
	'000	'000	'000	'000	'000	'000
<b>Industry</b>						
Mining	29.6	* 0.9	30.5	28.6	* 0.7	29.3
Manufacturing	64.8	* 7.0	71.8	67.9	* 6.7	74.6
Electricity, gas and water supply	6.2	0.2	6.4	6.1	0.2	6.3
Construction	41.1	* 2.6	43.8	33.8	* 2.1	36.0
Wholesale trade	23.2	* 7.5	30.6	29.8	* 6.3	36.1
Retail trade	48.8	58.3	107.1	54.0	56.5	110.5
Accommodation, cafes & restaurants	23.5	33.8	57.3	16.7	30.0	46.7
Transport and storage	23.3	* 4.7	28.0	20.8	* 4.1	24.9
Communication services	7.7	1.4	9.1	7.1	1.9	8.9
Finance & insurance	20.9	* 7.8	28.7	20.9	* 7.6	28.5
Property & business services	49.0	* 36.0	84.9	61.1	* 39.8	100.9
Government administration and defence	23.5	5.6	29.1	23.4	6.7	30.1
Education	39.2	24.3	63.5	40.3	30.9	71.1
Health & community services	40.6	41.9	82.6	36.5	44.3	80.8
Cultural & recreational services	7.3	* 11.3	18.6	6.9	* 11.6	18.6
Personal & other services	17.0	9.2	26.2	18.7	9.5	28.2
<b>All industries (a)</b>	467.5	252.6	720.1	473.9	259.1	733.0
<b>Sector</b>						
Private	363.3	211.3	574.6	371.0	211.7	582.7
Public	104.2	41.3	145.5	102.9	47.5	150.3

(a) Includes employees of government agencies classified to Agriculture, forestry and fishing.

Source: ABS Catalogue No. 6248.0.

# 4.1

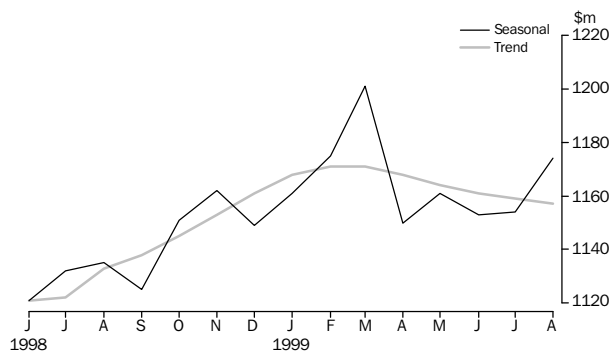
## MONTHLY RETAIL TURNOVER

	Food	Department stores	Clothing and soft goods	Household goods	Recreational goods
	\$m	\$m	\$m	\$m	\$m
<b>Months</b>					
Jun 98	451.4	92.0	49.3	179.4	46.8
Jul 98	495.6	106.7	54.0	158.3	53.8
Aug 98	490.6	90.6	48.5	151.7	50.7
Sep 98	490.0	92.3	49.9	149.4	51.5
Oct 98	519.6	108.9	55.7	174.3	54.1
Nov 98	493.6	116.0	56.1	170.7	56.0
Dec 98	584.9	195.2	74.8	216.2	83.5
Jan 99	517.5	92.7	56.0	160.1	50.8
Feb 99	474.0	75.0	45.6	158.1	50.5
Mar 99	518.6	92.3	53.3	170.2	54.9
Apr 99	505.2	90.5	56.0	158.6	49.1
May 99	491.1	110.4	64.2	176.8	51.0
Jun 99	474.0	91.3	57.5	175.9	50.0
Jul 99	506.9	102.0	59.7	179.9	47.3
Aug 99	489.3	88.2	52.5	181.9	46.5

	Hospitality and services	Other	Total	Seasonally adjusted	Trend estimates
	\$m	\$m	\$m	\$m	\$m
<b>Months</b>					
Jun 98	130.6	95.4	1 044.9	1 120.7	1 120.6
Jul 98	146.8	100.5	1 115.6	1 132.4	1 121.5
Aug 98	150.8	98.0	1 081.0	1 135.0	1 132.6
Sep 98	150.7	106.5	1 090.2	1 125.1	1 138.3
Oct 98	172.3	116.7	1 201.5	1 151.3	1 145.1
Nov 98	160.3	121.0	1 173.7	1 161.9	1 152.9
Dec 98	184.3	169.7	1 508.6	1 148.8	1 160.9
Jan 99	156.9	110.5	1 144.4	1 161.0	1 167.7
Feb 99	148.7	102.2	1 054.1	1 175.1	1 171.1
Mar 99	153.3	111.7	1 154.2	1 201.1	1 170.5
Apr 99	149.1	100.1	1 108.6	1 150.3	1 167.5
May 99	144.5	99.9	1 137.8	1 161.2	1 163.9
Jun 99	135.6	97.0	1 081.3	1 153.4	1 160.9
Jul 99	150.9	99.2	1 145.9	1 154.0	1 159.1
Aug 99	147.5	102.9	1 108.8	1 173.5	1 157.4

Source: ABS Catalogue No. 8501.0.

### MONTHLY RETAIL TURNOVER



Source: ABS Catalogue No. 8501.0.

# 5.1

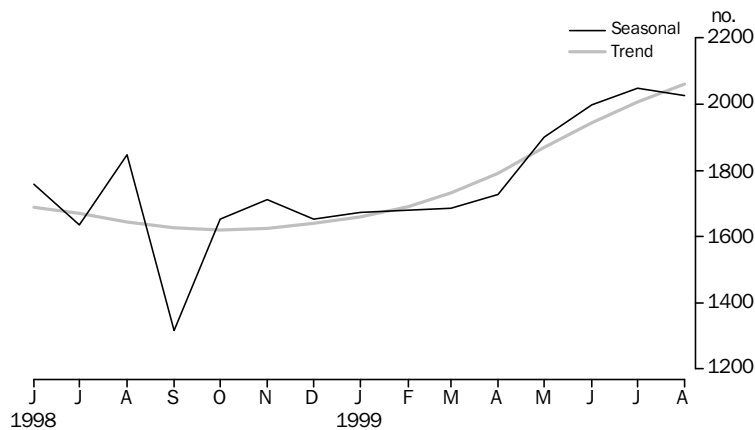
## DWELLING UNITS APPROVED

	NEW HOUSES.....		NEW OTHER RESIDENTIAL BUILDINGS.....		TOTAL (a).....	
	Dwelling Units	Value	Dwelling Units	Value	Dwelling Units	Value
	No.	\$m	No.	\$m	No.	\$m
<b>Financial years</b>						
1996-97	13 632	1 348.9	2 013	175.8	15 742	2 901.8
1997-98	15 828	1 634.2	2 526	222.0	18 460	2 943.8
1998-99	17 399	1 898.5	2 932	294.8	20 506	3 488.5
<b>Months</b>						
Jun 98	1 831	183.3	218	18.4	2 054	286.7
Jul 98	1 548	163.2	151	16.3	1 707	282.8
Aug 98	1 483	155.7	248	32.8	1 735	256.1
Sep 98	1 256	134.4	150	15.1	1 413	229.9
Oct 98	1 461	160.6	169	15.2	1 634	288.1
Nov 98	1 401	149.5	229	28.5	1 649	272.4
Dec 98	1 391	155.4	231	24.7	1 641	270.8
Jan 99	1 148	127.4	157	20.9	1 307	365.0
Feb 99	1 290	140.7	253	28.9	1 547	344.0
Mar 99	1 606	176.3	237	19.1	1 921	308.1
Apr 99	1 424	154.5	189	20.4	1 625	261.6
May 99	1 630	177.0	306	26.7	1 941	282.7
Jun 99	1 761	203.8	612	46.2	2 386	327.0
Jul 99	1 686	183.8	345	42.9	2 043	343.3
Aug 99	1 745	191.0	290	26.8	2 067	347.3

(a) Includes alterations, additions, conversions and non-residential buildings.

Source: ABS Catalogue No. 8731.5.

### TOTAL DWELLING UNITS APPROVED



Source: ABS Catalogue No. 8731.5.

# 5.2

## VALUE OF NON-RESIDENTIAL BUILDING APPROVED

	Private	Public	Total
	\$m	\$m	\$m
<b>Financial Years</b>			
1996-97	773.9	430.0	1204.5
1997-98	706.7	193.3	899.8
1998-99	883.7	188.6	1 072.3
<b>Months</b>			
Jun 98	62.4	8.8	71.1
Jul 98	65.5	20.3	85.9
Aug 98	39.9	11.4	51.3
Sep 98	60.8	3.0	63.8
Oct 98	78.0	14.4	92.4
Nov 98	64.0	13.0	77.0
Dec 98	54.4	17.1	71.5
Jan 99	163.8	33.3	197.1
Feb 99	121.3	34.9	156.3
Mar 99	81.6	5.1	86.6
Apr 99	62.1	6.2	68.3
May 99	48.5	12.7	61.2
Jun 99	43.8	17.2	60.9
Jul 99	57.2	34.5	91.7
Aug 99	61.1	44.3	105.4

Source: ABS Catalogue No. 8731.5.

For more information regarding Building Approvals, please contact Pam Prince on (08) 9360 5207.

# 5.3

## SELECTED HOUSING PRICE INDEXES: PERTH

	Materials used in house building	Established homes	Project homes
<b>Financial Years</b>			
1996-97	115.3	109.2	101.3
1997-98	115.9	113.3	102.2
1998-99	116.1	118.9	106.1
<b>Quarters</b>			
Mar 98	115.7	113.7	102.5
Jun 98	115.9	114.4	103.6
Sep 98	116.1	115.4	104.9
Dec 98	116.3	118.1	105.8
Mar 99	116.0	120.8	106.2
Jun 99	115.9	121.4	107.5

Base of each index: 1989-90 = 100.0.

Source: ABS Catalogue Nos. 6408.0 and 6416.0.

# 5.4

## PRICE INDEX OF MATERIALS USED IN BUILDING OTHER THAN HOUSE BUILDING: PERTH

### SPECIAL SERIES.....

	<i>All groups</i>	<i>All Electrical materials</i>	<i>All Mechanical services</i>	<i>All Plumbing materials</i>
<b>Financial Years</b>				
1996-97	114.6	110.6	113.3	119.2
1997-98	114.6	109.3	113.4	124.6
1998-99	114.1	107.8	116.1	124.3
<b>Quarters</b>				
Mar 98	114.2	107.2	113.2	124.6
Jun 98	114.2	109.2	113.8	124.1
Sep 98	114.2	107.9	115.0	124.0
Dec 98	114.2	107.4	116.6	124.0
Mar 99	113.9	107.9	116.3	124.8
Jun 99	114.1	107.8	116.5	124.5

### SELECTED MAJOR BUILDING MATERIALS.....

	<i>Structural timber</i>	<i>Clay bricks</i>	<i>Ready mixed concrete</i>	<i>Structural steel</i>	<i>Aluminium windows</i>
<b>Financial Years</b>					
1996-97	106.6	124.1	120.1	113.9	117.0
1997-98	106.8	127.8	117.4	116.5	117.9
1998-99	105.0	131.4	114.5	117.5	115.0
<b>Quarters</b>					
Mar 98	106.4	127.6	116.8	116.7	117.0
Jun 98	106.1	128.8	116.8	116.9	117.0
Sep 98	106.5	131.4	115.9	117.6	117.0
Dec 98	104.6	131.4	115.0	117.4	113.8
Mar 99	105.0	131.4	113.3	117.4	113.8
Jun 99	103.9	131.2	113.9	117.4	115.2

Base of each index 1989-90 = 100.0.

Source: ABS Catalogue No. 6407.0.

*For more information regarding these tables, please contact Peter Hodgson on (08) 9360 5922.*

# 6.1

## LIVESTOCK SLAUGHTERED ('000)

	CATTLE.....			OTHER.....			
	Bulls, bullocks, steers	Cows, heifers	Total (excluding calves)	Calves	Sheep	Lambs	Pigs
<b>Financial Years</b>							
1996-97	192.3	214.5	406.8	5.6	2 635.2	2 081.2	550.2
1997-98	196.0	252.1	448.1	5.6	2 717.4	1 856.5	550.0
1998-99	194.1	231.8	424.8	6.0	1 836.0	1 994.0	552.4
<b>Quarters</b>							
Mar 98	46.0	76.5	122.5	1.7	738.6	377.3	136.4
Jun 98	45.3	56.4	101.7	1.3	526.3	423.9	147.9
Sep 98	44.6	59.7	104.3	1.5	380.5	469.7	144.0
Dec 98	65.2	62.9	128.1	1.5	476.3	590.0	133.3
Mar 99	44.4	58.3	102.7	1.5	551.7	454.4	138.1
Jun 99	39.9	50.9	90.7	1.5	427.8	479.9	137.0

Note: From June 1998, the collection frequency of this information changed from monthly to quarterly.

Source: ABS Catalogue No. 7215.0.

# 6.2

## MEAT PRODUCED (a)(Tonnes Carcass Weight)

	Beef	Veal	Mutton	Lamb	Pig meat
<b>Financial Years</b>					
1996-97	91 369	319	52 164	35 701	38 837
1997-98	102 482	312	56 442	33 581	35 499
1998-99	102 670	406	37 740	37 471	36 513
<b>Quarters</b>					
Mar 98	27 546	89	15 029	6 868	8 433
Jun 98	22 557	73	10 785	7 814	9 852
Sep 98	24 477	90	7 620	8 661	9 542
Dec 98	32 072	102	10 155	11 185	8 474
Mar 99	25 092	106	11 361	8 643	8 937
Jun 99	21 029	108	8 643	8 982	9 560

(a) Red meat is shown in carcass weight and excludes offal.

Note: From June 1998, the collection frequency of this information changed from monthly to quarterly.

Source: ABS Catalogue No. 7215.0.

*For more information regarding these tables, please contact Ann Soutar on*

*(08) 9360 5180.*

# 6.3

## WOOL RECEIVALS AND LIVE SHEEP EXPORTS

	RECEIVALS OF TAXABLE WOOL BY BROKERS AND DEALERS(a) .....		EXPORT OF LIVE SHEEP (b).....		
	<i>Bales</i>	<i>Tonnes</i>	<i>Quantity</i>	<i>Gross Value</i>	<i>Gross Weight</i>
	'000		'000	\$'000	'000t
<b>Financial Years</b>					
1996-97	909 768	160 021	3 747.5	136 613	188.5
1997-98 p	699 492	153 885	3 283.9	130 798	167.0
1998-99 p	684 610	145 751	4 033.1	149 027	206.7
<b>Quarters</b>					
Mar 98 p	195 422	41 001	880.8	34 558	45.0
Jun 98 p	100 347	23 253	858.1	35 587	42.7
Sep 98 p	191 427	39 785	854.2	32 928	43.9
Dec 98 p	191 210	41 572	1 187.2	44 067	62.2
Mar 99 p	198 316	40 322	1 120.9	40 845	58.0
Jun 99 p	103 657	24 073	870.8	31 153	42.5

(a) Source: National Council of Wool Selling Brokers.

(b) Source: ABS FASTTRACCS Service.

Note: From June 1998, the collection frequency of this information changed from monthly to quarterly.

*For more information regarding this table, please contact Information Inquiries on (08) 9360 5140.*



# 6.4

## ENERGY PRODUCTION

	Coal(a)	Electricity generated	Gas for distribution(b)	Crude oil(c)(d)	Natural gas(d)
	'000 tonnes	million kWh	million MJ	mega-litres	million m <sup>3</sup>
<b>Financial Years</b>					
1996-97	5 557	16 738	204 257	15 974	16 713
1997-98	5 709	17 203	230 201	17 561 p	17 707 p
1998-99	5 797	16 718	228 774	13 823 p	16 941 p
<b>Quarters</b>					
Mar 98	1 405	4 608	57 285	3 975 p	4 432 p
Jun 98	1 359	4 169	58 241	4 533 p	4 263 p
Sep 98	1 249	4 259	58 576	4 619 p	4 822 p
Dec 98	1 596	4 127	59 181	3 149 p	3 068 p
Mar 99	1 580	4 325	55 033	3 114 p	4 443 p
Jun 99	1 372	4 007	55 984	2 941 p	4 608 p

(a) Source: Department of Minerals and Energy.

(b) Available for issue through mains.

(c) Includes condensate.

(d) Source: Australian Bureau of Agriculture and Resource Economics.

*For more information regarding these tables, please contact Pamela Prince on*

*(08) 9360 5207.*

# 6.5

## MINERAL EXPLORATION: EXPENDITURE BY TYPE OF MINERAL SOUGHT

	METALLIC MINERALS.....			NON-METALLIC MINERALS.....		Total minerals \$m
	Base metals(a)	Gold	Other	Diamonds	Other	
	\$m	\$m	\$m	\$m	\$m	
<b>Financial Years</b>						
1996-97	88.1	531.7	n.a.	38.6	n.a.	691.7
1997-98	117.1	459.3	3.8	31.4	2.1	660.4
1998-99	90.9	330.7	3.4	32.9	0.9	523.1
<b>Quarters</b>						
Mar 98	24.7	100.0	0.2	6.0	0.4	142.0
Jun 98	32.9	111.5	2.6	7.6	0.4	173.4
Sep 98	30.3	86.1	0.8	10.4	0.3	154.0
Dec 98	24.2	102.0	0.9	12.4	0.3	157.3
Mar 99	20.9	67.2	1.1	2.7	0.2	102.3
June 99	15.5	75.4	0.6	7.4	0.1	109.4

(a) Includes copper, lead, zinc, silver, nickel and cobalt.

Source: ABS Catalogue No. 8412.0.

# 6.6

## MINERAL PRODUCTION

	Iron ore	Bauxite	Gold	Ilmenite	Nickel	Diamonds
	'000 tonnes	'000 tonnes	tonnes	'000 tonnes	'000 tonnes	'000 carats
<b>Financial Years</b>						
1996-97	150 711	27 466	227.0	1 910	115	42 566
1997-98	155 485	28 544	240.5	2 220	134	43 046
1998-99 p	137 470	29 237	219.3	2 130	130	35 948
<b>Quarters</b>						
Mar 98	39 465	7 175	60.9	565	33	9 573
Jun 98	36 050	7 183	57.5	582	36	9 733
Sep 98 p	35 458	6 982	54.7	592	38	12 481
Dec 98 p	36 181	7 416	58.9	482	37	9 056
Mar 99 p	33 158	7 723	52.0	538	20	7 109
Jun 99 p	32 674	7 116	53.8	518	34	7 264

Source: Australian Bureau of Agricultural and Resource Economics.

For more information regarding these tables, please contact  
Pamela Prince on (08) 9360 5207.

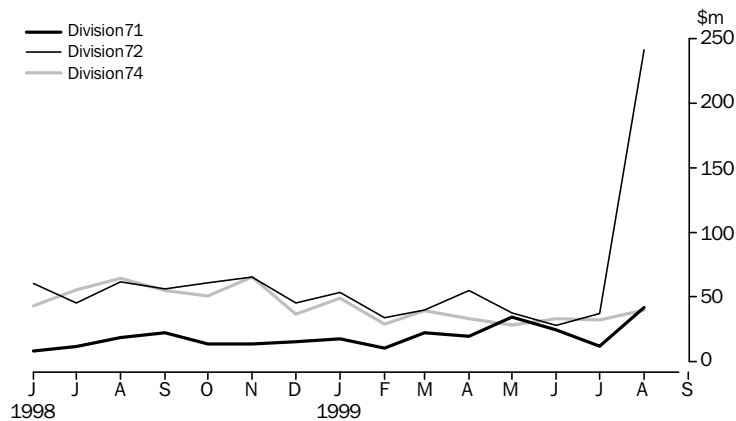
# 7.1

## IMPORTS BY SELECTED DIVISIONS

	33	71	72	74	78
	<i>Petroleum, petroleum products, etc</i>	<i>Power generating machinery and equipment</i>	<i>Machinery specialised for particular industries</i>	<i>General industrial machinery and equipment</i>	<i>Road vehicles</i>
	\$m	\$m	\$m	\$m	\$m
<b>Financial Years</b>					
1996-97	1 043.6	309.8	696.8	420.9	811.7
1997-98	799.0	208.0	618.8	596.7	1 051.9
1998-99	794.2	225.5	583.8	540.4	1 005.1
<b>Months</b>					
Jun 98	60.7	8.1	60.4	43.2	94.8
Jul 98	66.2	11.5	45.5	55.6	81.9
Aug 98	80.3	18.4	61.4	64.4	88.4
Sep 98	65.1	22.6	56.5	55.0	69.1
Oct 98	57.0	13.9	61.2	51.1	94.8
Nov 98	64.6	14.0	65.4	65.3	70.8
Dec 98	52.4	15.4	45.6	36.6	78.3
Jan 99	58.0	17.4	53.6	49.2	90.9
Feb 99	59.8	10.5	33.8	29.0	81.2
Mar 99	47.7	22.6	40.1	39.3	88.0
Apr 99	91.5	19.9	54.9	33.1	99.1
May 99	85.8	34.3	38.0	28.2	79.0
Jun 99	65.8	24.7	27.9	33.6	83.6
Jul 99	88.6	12.2	37.3	32.0	102.4
Aug 99	97.7	41.9	241.2	39.7	96.6

Source: ABS FASTTRACCS Service.

### IMPORTS BY SELECTED DIVISION



Source: ABS FASTTRACCS Service.

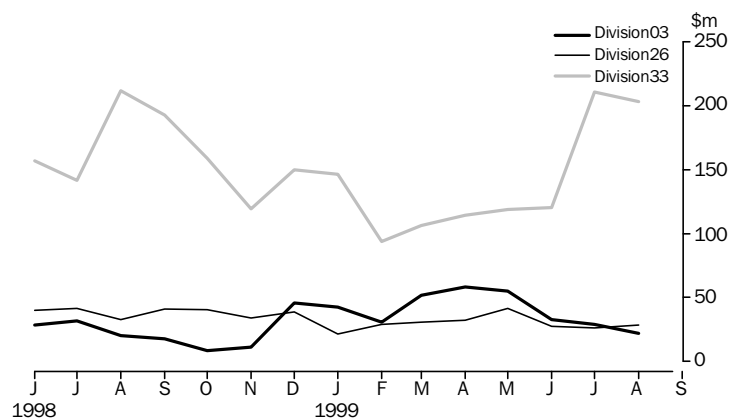
# 7.2

## EXPORTS BY SELECTED DIVISIONS

	03	04	26	28	33
	<i>Fish, crustaceans, molluscs, etc</i>	<i>Cereals and cereal preparations</i>	<i>Textile fibres and waste (excluding yarn or fabric)</i>	<i>Metalliferous ores and metal scrap</i>	<i>Petroleum, petroleum products etc.</i>
	\$m	\$m	\$m	\$m	\$m
<b>Financial Years</b>					
1996-97	371.3	1 667.6	646.5	3 614.6	1 942.8
1997-98	337.2	1 860.5	655.3	4 219.1	2 046.8
1998-99	406.0	1 770.4	410.3	4 300.8	1 670.3
<b>Months</b>					
Jun 98	28.5	193.1	39.9	375.2	156.8
July 98	31.8	118.5	41.4	362.9	141.5
Aug 98	20.4	197.0	32.7	406.7	211.7
Sep 98	17.7	149.1	40.8	435.2	192.6
Oct 98	8.2	130.3	40.4	361.5	159.2
Nov 98	11.0	113.2	33.8	367.8	119.4
Dec 98	45.7	159.8	39.1	396.5	149.7
Jan 99	42.8	194.3	21.3	341.1	146.3
Feb 99	30.8	161.2	29.0	324.0	93.9
Mar 99	51.8	167.9	30.5	354.4	106.3
Apr 99	58.3	119.4	32.4	300.0	114.4
May 99	54.9	97.0	41.6	295.3	118.8
Jun 99	32.6	162.9	27.5	355.3	120.6
Jul 99	29.3	129.7	26.0	351.7	210.9
Aug 99	22.1	95.8	28.4	336.8	203.0

Source: ABS FASTTRACCS Service.

### EXPORTS BY SELECTED DIVISION



Source: ABS FASTTRACCS Service.

For further information regarding these tables, please contact Information Inquiries on (08) 9360 5140.

# 8.1

## NEW MOTOR VEHICLE REGISTRATIONS (a)

	WESTERN AUSTRALIA.....					PERTH STATISTICAL DIVISION.....	
	Passenger vehicles	Light commercial vehicles	Trucks and buses	Motorcycles and scooters Total(b)	Motorcycles and scooters	Total(b)	Motorcycles and scooters
<b>Financial Years</b>							
1996-97	56 984	10 828	2 207	70 019	2 692	54 721	1 837
1997-98	67 675	11 486	2 295	81 456	3 103	63 131	2 104
1998-99	66 573	10 823	2 375	79 771	3 161	62 268	2 155
<b>Months</b>							
Jun 98	7 362	1 380	235	8 977	234	6 902	173
Jul 98	6 064	937	238	7 239	264	5 702	173
Aug 98	5 417	783	186	6 386	277	5 147	180
Sep 98	5 400	790	188	6 378	263	5 062	172
Oct 98	5 448	866	201	6 515	281	5 132	185
Nov 98	5 436	821	186	6 443	343	5 079	280
Dec 98	5 941	928	191	7 060	349	5 504	247
Jan 99	4 414	832	151	5 402	216	4 108	150
Feb 99	5 011	908	185	6 104	253	4 762	177
Mar 99	6 115	1 072	208	7 395	260	5 751	170
Apr 99	5 185	727	157	6 069	223	4 666	138
May 99	5 128	878	197	6 203	223	4 871	140
Jun 99	7 015	1 281	282	8 577	208	6 484	143
Jul 99	4 206	685	119	5 010	269	4 135	179
Aug 99	4 779	843	185	5 807	268	4 594	171

(a) Excludes plant and equipment, caravans and trailers. (b) Excludes motor cycles.

Source: Unpublished New Motor Vehicle Registrations (9303.5.40.001).

# 8.2

## VEHICLE REGISTRATION STATISTICS (a)

	PASSENGER VEHICLES.....		OTHER VEHICLES.....		TOTAL.....	
	Original	Trend	Original	Trend	Original	Trend
<b>Months</b>						
Jun 98	7 362	6 053	1 615	1 196	8 977	7 249
Jul 98	6 064	5 987	1 175	1 177	7 239	7 164
Aug 98	5 417	5 820	969	1 147	6 386	6 967
Sep 98	5 400	5 596	978	1 114	6 378	6 710
Oct 98	5 448	5 391	1 067	1 094	6 515	6 485
Nov 98	5 436	5 281	1 007	1 091	6 443	6 372
Dec 98	5 941	5 266	1 119	1 098	7 060	6 364
Jan 99	4 414	5 352	988	1 108	5 402	6 460
Feb 99	5 011	5 466	1 093	1 108	6 104	6 574
Mar 99	6 115	5 523	1 280	1 092	7 395	6 642
Apr 99	5 185	5 567	884	1 063	6 069	6 630
May 99	5 128	5 506	1 075	1 028	6 203	6 534
Jun 99	7 015	5 384	1 562	993	8 577	6 377
Jul 99	4 206	5 239	804	957	5 010	6 196
Aug 99	4 779	4 847	1 028	1 030	5 807	5 877

(a) Excludes motorcycles, plant and equipment, caravans and trailers.

Source: Unpublished New Motor Vehicle Registrations (9303.5.40.001).

For more information regarding these tables, please contact Elspeth Wilson on

(08) 9360 5242.

# 9.1

## PRIVATE NEW CAPITAL EXPENDITURE BY SELECTED INDUSTRY GROUPS

	SELECTED INDUSTRY.....			TOTAL.....	
	Mining \$m	Manufacturing \$m	Other selected industries \$m	Original \$m	Seasonally adjusted \$m
<b>Financial Years</b>					
1996-97	4 158	625	1 834	6 617	6 627
1997-98	5 759	1 049	1 954	8 761	8 746
1998-99	3 646	1 284	2 036	6 965	7 016
<b>Quarters</b>					
Mar 98	1 473	240	479	2 191	2 295
Jun 98	1 607	278	498	2 382	2 298
Sep 98	1 190	408	616	2 214	2 338
Dec 98	824	304	509	1 637	1 549
Mar 99	893	332	413	1 638	1 703
Jun 99	739	240	498	1 476	1 426

Source: ABS Catalogue No. 5646.0.

*For more information regarding these tables, please contact  
John Blanchette on Sydney (02) 9268 4357.*

## WESTERN AUSTRALIA.....

Indicator	Period	Unit	Current Australian figure	Current figure	Change from last period (%)	Figure one year ago	Change from one year ago(%)
<b>Population</b>							
Estimated resident population	Mar qtr 98 p	'000	18 918.4	1 854.6	0.5	1 821.8	1.8
Natural increase	Mar qtr 98 p	No.	30 083	3 442	2.0	3 761	-8.5
<b>Tourism</b>							
<i>Hotels, motels etc and serviced apartments</i>							
Guest arrivals	Jun qtr 99	'000	7 518	625	4.9	559	11.8
Guest rooms available	Jun qtr 99	No.	185 303	17 783	1.5	16 643	6.8
Room occupancy rates	Jun qtr 99	%	56	53	-5.4	54	-1.9
<i>Overseas visitors</i>							
Short-term arrivals	Jul 99	No.	388 500	33 100	17.6	31 070	6.5
Long-term arrivals	Jul 99	No.	18 100	2 180	207.0	1 950	11.8
<i>Resident Departures</i>							
Short-term departures	Jul 99	No.	286 600	40 280	19.8	36 280	11.0
Long-term departures	Jul 99	No.	6 810	700	18.6	660	-6.1
<b>Employment</b>							
<i>Employed persons</i>							
Trend	Sep 99	'000	8 808.3	907.0	0.2	893.7	1.5
<i>Unemployed persons</i>							
Trend	Sep 99	'000	682.8	64.7	1.1	68.6	-5.7
<i>Participation rate</i>							
Trend	Sep 99	%	63.2	66.2	0.1	66.9	-0.7
<i>Unemployment rate</i>							
Trend	Sep 99	%	7.2	6.7	0.1	7.1	-0.4
<i>Full-time adult average weekly earnings</i>							
<i>Trend</i>							
Males	May 99	\$	850.50	864.90	-0.1	866.30	0.2
Females	May 99	\$	684.80	656.30	0.8	629.70	4.2
Persons	May 99	\$	789.10	791.30	0.2	781.20	0.1
<b>Retail</b>							
<i>Monthly retail turnover</i>							
Original	Aug 99	\$m	11 341.3	1 108.8	-3.2	1 081.0	2.6
Trend	Aug 99	\$m	11 790.0	1 157.4	-0.1	1 132.6	2.2
<b>Construction</b>							
<i>Building Approvals</i>							
Dwelling Units	Aug 99	No	15 207	2 067	1.2	1 735	19.1
Value of all building	Aug 99	\$m	3 235.5	347.3	1.2	256.1	35.6
<i>House Price Indexes</i>							
Materials used in house building	Jun qtr 99	Index No.	119.2	115.9	-0.1	115.9	0.0
Established houses	Jun qtr 99	Index No.	134.3	121.4	0.5	114.4	6.1
Project homes	Jun qtr 99	Index No.	114.8	107.5	1.2	103.6	3.8
<b>Mineral Exploration</b>							
Gold	Jun qtr 99	\$m	112.7	75.4	12.2	111.5	-32.4
Other minerals	Jun qtr 99	\$m	82.3	34.0	0.0	61.9	-33.0
<b>Overseas Trade</b>							
Imports	Aug 99	\$m	8 873.7	913.5	53.0	789.3	15.7
Exports	Aug 99	\$m	7 337.3	1 726.6	-1.9	1 992.0	-13.3
<b>Transport</b>							
<i>Passenger vehicle registrations</i>							
Original	Aug 99	No.	49 668	4 779	13.6	5 417	-11.8
Trend	Aug 99	No.	51 494	4 847	-4.6	5 820	-16.7
<i>Total registrations</i>							
Original	Aug 99	No.	59 892	5 807	15.9	6 386	-9.1
Trend	Aug 99	No.	62 203	5 878	-3.7	6 967	-15.6
<b>Finance</b>							
<i>Private New Capital Expenditure</i>							
Original	Jun qtr 99	\$m	10 691	1 476	-9.9	2 382	-38.0
Seasonally adjusted	Jun qtr 99	\$m	9 881	1 426	-16.3	2 298	-37.9

**SELF-HELP ACCESS TO STATISTICS**

- CPI INFOLINE* For current and historical Consumer Price Index data, call 1902 981 074 (call cost 75c per minute).
- DIAL-A-STATISTIC* For the latest figures for National Accounts, Balance of Payments, Labour Force, Average Weekly Earnings, Estimated Resident Population and the Consumer Price Index call 1900 986 400 (call cost 75c per minute).
- INTERNET* [www.abs.gov.au](http://www.abs.gov.au)
- LIBRARY* A range of ABS publications is available from public and tertiary libraries Australia-wide. Contact your nearest library to determine whether it has the ABS statistics you require.

**WHY NOT SUBSCRIBE?**

- PHONE* +61 1300 366 323
- FAX* +61 03 9615 7848

**CONSULTANCY SERVICES**

ABS offers consultancy services on a user pays basis to help you access published and unpublished data. Data that is already published and can be provided within 5 minutes is free of charge. Statistical methodological services are also available. Please contact:

<i>INQUIRIES</i>	<i>City</i>	<i>By phone</i>	<i>By fax</i>
	Canberra	02 6252 6627	02 6207 0282
	Sydney	02 9268 4611	02 9268 4668
	Melbourne	03 9615 7755	03 9615 7798
	Brisbane	07 3222 6351	07 3222 6283
	Perth	08 9360 5140	08 9360 5955
	Adelaide	08 8237 7400	08 8237 7566
	Hobart	03 6222 5800	03 6222 5995
	Darwin	08 8943 2111	08 8981 1218

- POST* Client Services, ABS, PO Box 10, Belconnen ACT 2616
- EMAIL* [client.services@abs.gov.au](mailto:client.services@abs.gov.au)



2130550010995  
ISSN 0727-2367

RRP \$17.50